

4' MANHOLE TO BE USED FOR PIPE WITH DIAMETER OF 18" OR SMALLER UNLESS OTHERWISE SPECIFIED BY THE ENGINEER. THIS APPLIES ONLY WHEN SANITARY SEWER PIPE IS BEING LAID.

**NOTES**

PRECAST REINFORCED CONCRETE MANHOLES SHALL CONFORM TO ASTM SPECIFICATION C478. EXCEPT WHERE OTHERWISE SHOWN ON DETAILS. MANHOLES MUST BE ALLOWED TO CURE A MINIMUM OF 7 DAYS PRIOR TO SHIPMENT. THE DATE OF MANUFACTURE SHALL BE INDENTED INTO ALL MANHOLE RISERS AND TOP SECTIONS. ADDITIONAL DRAWINGS AND CHARTS FOR ORDERING VARIOUS SECTIONS ON FILE WITH THE CITY OF BURLINGTON, N.C.

MANHOLE SHALL BE VACUUM TESTED WITH BRICK OR GRADE RING ADJUSTMENTS AND FRAME INSTALLED.

MAX. 3 COURSES OF BRICK (8") OR 2-4" GRADE RINGS TO BE ADDED VERTICALLY.

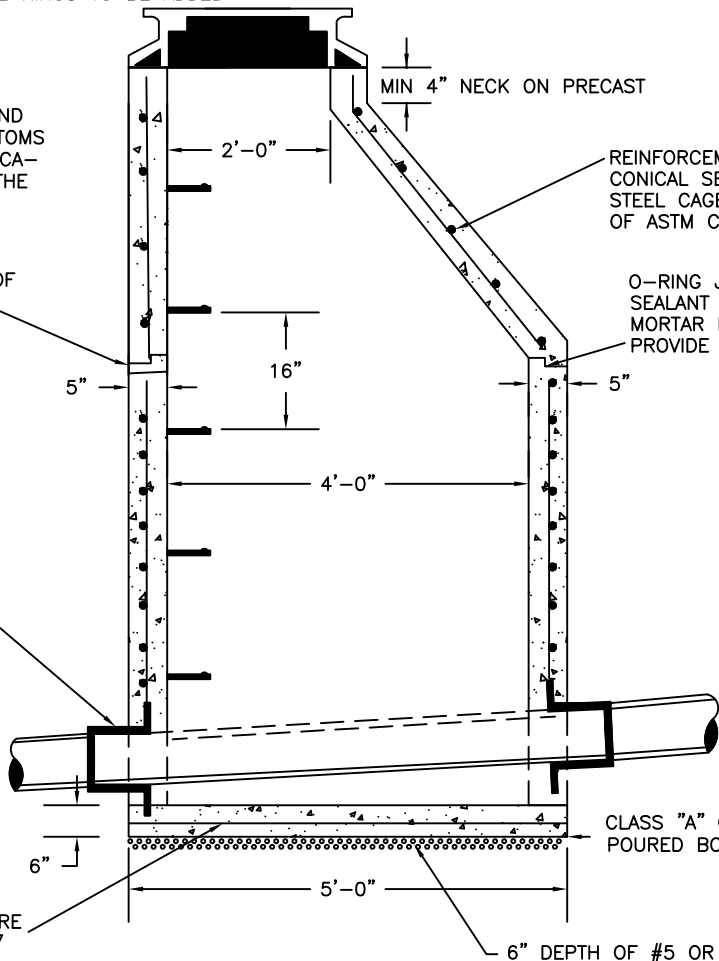
**NOTES**

ECCENTRIC CONE SECTIONS AND MONOLITHICALLY POURED BOTTOMS ARE ACCEPTABLE BUT SPECIFICATION REQUIREMENTS REMAIN THE SAME AS SHOWN ON DETAILS.

CONSEAL TAPE OUTSIDE OF ALL JOINTS

FOR SANITARY SEWER ONLY: FLEXIBLE MANHOLE SLEEVE

4' X 8' STEEL WIRE MESH 1/4" AND 7 GAUGE WIRE OR EQUAL AS APPROVED BY THE ENGINEER



MIN 4" NECK ON PRECAST

REINFORCEMENT OF RISERS AND CONICAL SECTIONS SHALL BE WELDED STEEL CAGE MEETING THE REQUIREMENT OF ASTM C478.

O-RING JOINT RUBBER "ROPE" SEALANT JOINT OR MAS-STICK JOINT. MORTAR MAY BE REQUIRED IN ORDER TO PROVIDE A WATER-TIGHT JOINT.

CLASS "A" CONCRETE OR MONOLITHICALLY POURED BOTTOMS.

6" DEPTH OF #5 OR #57 WASHED STONE



DATE	REVISED	SCALE	DETAIL
8/18/04	09/24/08	NOT TO SCALE	SS-4

4' PRECAST REINFORCED MANHOLE  
CITY OF BURLINGTON, NORTH CAROLINA  
ENGINEERING DEPARTMENT