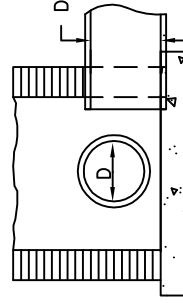


SECTION-XX



PART SECTION-YY

NOTES:

ALL MORTAR JOINTS ARE TO BE 1/2" +- 1/8"
 ALL EXPOSED JOINTS WILL BE CONCAVE TOOLED.
 CLASS "B" CONCRETE TO BE USED FOR BASE.
 FORMS ARE TO BE USED FOR THE CONSTRUCTION OF
 THE BASE.

PRECAST CONCRETE MANHOLE, JUMBO BRICK WILL BE PERMITTED.
 CONCRETE BRICK OR 4" SOLID CONCRETE BLOCKS MAY BE USED
 IN THE LIEU OF CLAY BRICK.

IF REINFORCED CONCRETE PIPE IS SET IN BASE SLAB
 OF BOX USE STANDARD SPECIFICATION DRAWING SD-1

WHERE THE MANHOLE IS EXPOSED TO ROAD TRAFFIC THE
 TOP OF THE MANHOLE IS TO BE FLUSH WITH THE PAVEMENT,
 AT OTHER LOCATIONS IT SHOULD BE A MINIMUM OF 9"
 ABOVE THE GROUND.

MANHOLES OVER 3'-6" IN DEPTH SHALL BE PROVIDED
 WITH STEPS 1'-3" ON CENTERS.

SECTION ON X

SECTION-XX

PART SECTION-YY

PIPE DIM	MIN. DIMENSIONS & QUANTITIES FOR MANHOLE				
	CU. YDS. CONC.	TOTAL BRICK MASONRY CU. YDS.	CU. YDS. BRICK MASONRY PER. FT. HT.	DEDUCTIONS FOR ONE PIPE (CU. YDS.)	R.C.
D	BASE	ABOVE S-L	BELOW S-L	C.M.	R.C.
12"	0.560	0.530	0.323	0.020	0.032
15"				0.031	0.047
18"				0.044	0.065
24"				0.078	0.113
30"				0.122	0.170
36"	0.560	0.530	0.323	0.176	0.238



DATE	REVISED	SCALE
8/16/04	8/18/04	NOT TO SCALE

DETAIL SD-13

STANDARD BRICK MANHOLE
 CITY OF BURLINGTON, NORTH CAROLINA
 ENGINEERING DEPARTMENT