

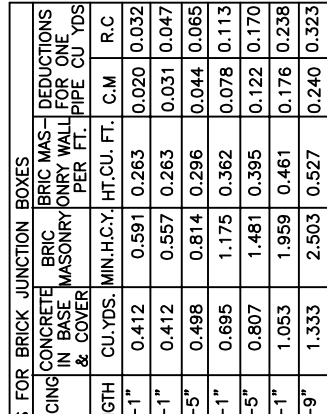
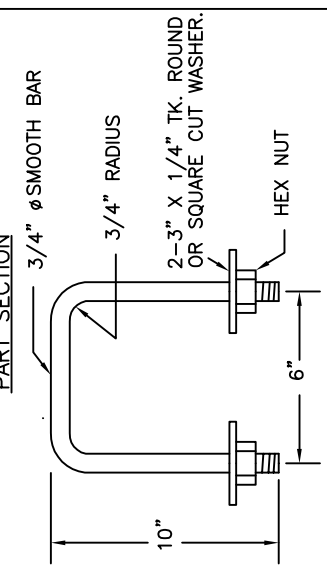
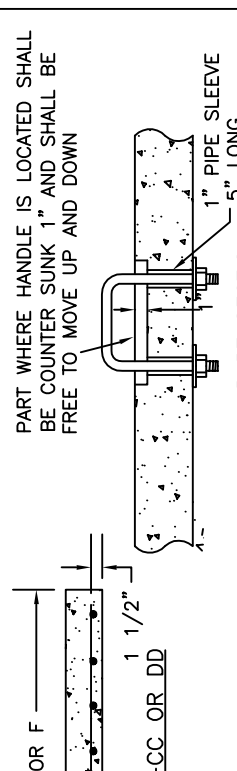
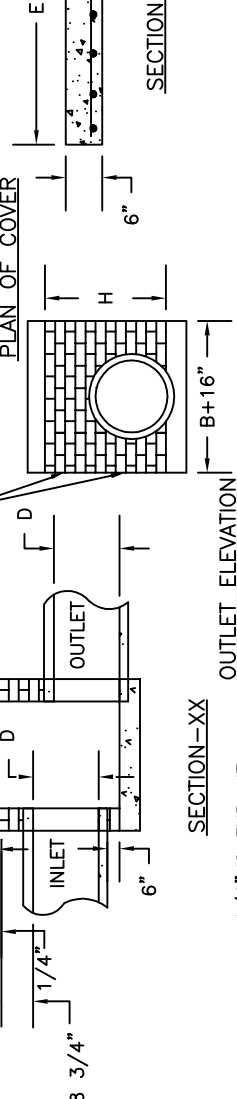
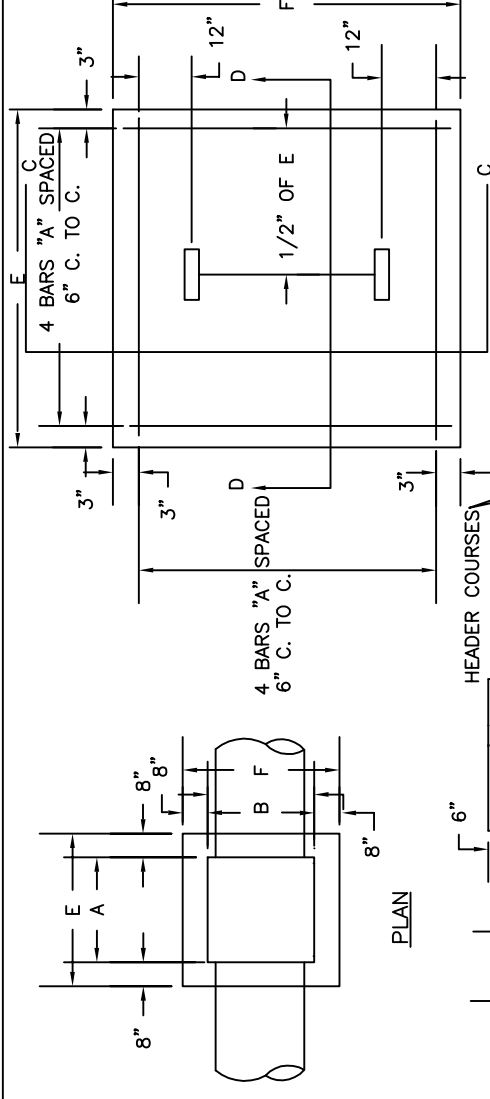
DATE 8/16/04
 REVISED 8/18/04

SCALE NOT TO SCALE

DETAIL SD-8

STANDARD BRICK JUNCTION BOX 12" THRU 66" PIPE
 CITY OF BURLINGTON, NORTH CAROLINA
 ENGINEERING DEPARTMENT

- GENERAL NOTES:
1. ALL DROP INLETS OVER 3'-6" IN DEPTH TO BE PROVIDED WITH STEPS 1'-3" ON CENTER. STEPS SHALL BE IN ACCORDANCE WITH STANDARD DETAIL DRAWINGS SS-8 & SS-9
 2. CLASS "A" CONCRETE 3000 PSI TO BE USED.
 3. JUMBO BRICK, CONCRETE BLOCK OR PRE-CAST CONCRETE MAY BE USED IN LIEU OF CLAY BRICK.
 4. FOR 8'-0" IN HEIGHT OR LESS USE 8" WALL. OVER 8'-0" IN HEIGHT USE 12" WALL TO 6'-0" FROM TOP OF WALL AND 8" WALL FOR THE REMAINING 6'-0".
 5. IF REINFORCED CONCRETE PIPE IS SET IN BASE OF SLAB OF BOX USE STANDARD DETAIL DRAWING SD-1.
 6. ALL EXPOSED CONCRETE CORNERS TO BE CHAMFERED 1".
 7. ALL EXPOSED MASONRY JOINTS SHALL BE CONCAVE TOOLED.



DIMENSIONS AND QUANTITIES FOR BRICK JUNCTION BOXES

PIPE SPAN	DIMENSIONS OF BOX & PIPE			NO. BARS	LENGTH	CONCRETE IN BASE & COVER	BRICK MASONRY PER FT.	REINFORCING BARS	NO. BARS	LENGTH	CU. YDS. MIN. H.C.Y.	HT. CU. FT.	C.M.	R.C.	DEDUCTIONS IN BRICK MASONRY WALL FOR ONE PIPE CU YDS
	A	B	H												
0															
12"	2'-0"	2'-0"	2'-3"	3'-4"	3'-4"	12	0.412	0.591	0.263	0.020	0.032	0.032	0.032	0.032	0.032
15"	2'-0"	2'-0"	2'-6"	3'-4"	3'-4"	12	0.412	0.557	0.263	0.031	0.047	0.047	0.047	0.047	0.047
18"	2'-4"	2'-4"	2'-9"	3'-8"	3'-8"	14	0.498	0.814	0.296	0.044	0.065	0.065	0.065	0.065	0.065
24"	3'-0"	3'-0"	3'-3"	4'-4"	4'-4"	16	0.695	1.175	0.362	0.078	0.113	0.113	0.113	0.113	0.113
30"	3'-4"	3'-4"	3'-9"	4'-8"	4'-8"	16	0.807	1.481	0.395	0.122	0.170	0.170	0.170	0.170	0.170
36"	4'-0"	4'-0"	4'-3"	5'-4"	5'-4"	20	1.053	1.959	0.461	0.176	0.238	0.238	0.238	0.238	0.238
42"	4'-8"	4'-8"	4'-9"	6'-0"	6'-0"	22	1.333	2.503	0.527	0.240	0.323	0.323	0.323	0.323	0.323
48"	5'-0"	5'-0"	5'-3"	6'-4"	6'-4"	24	1.486	2.940	0.560	0.313	0.422	0.422	0.422	0.422	0.422
54"	5'-6"	5'-6"	5'-9"	6'-10"	6'-10"	26	1.729	3.502	0.609	0.396	0.535	0.535	0.535	0.535	0.535
60"	6'-0"	6'-0"	6'-3"	7'-4"	7'-4"	28	1.992	4.113	0.658	0.489	0.660	0.660	0.660	0.660	0.660
66"	6'-6"	6'-6"	6'-3"	7'-10"	7'-10"	30	2.273	4.778	0.708	0.591	0.798	0.798	0.798	0.798	0.798

