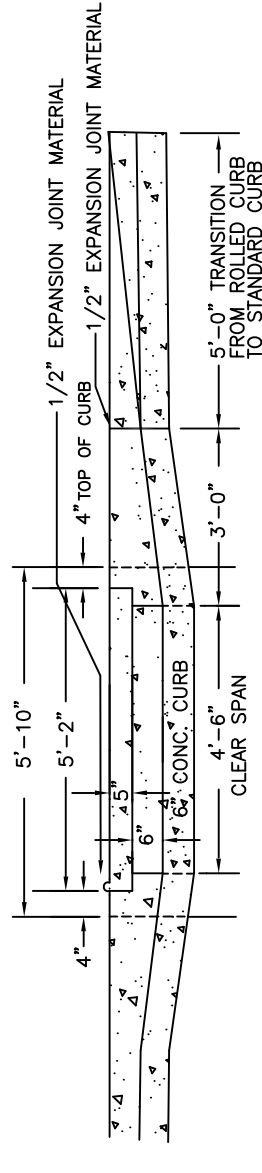
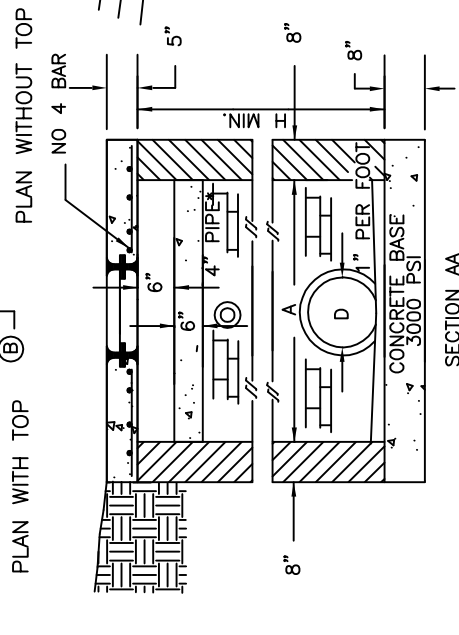
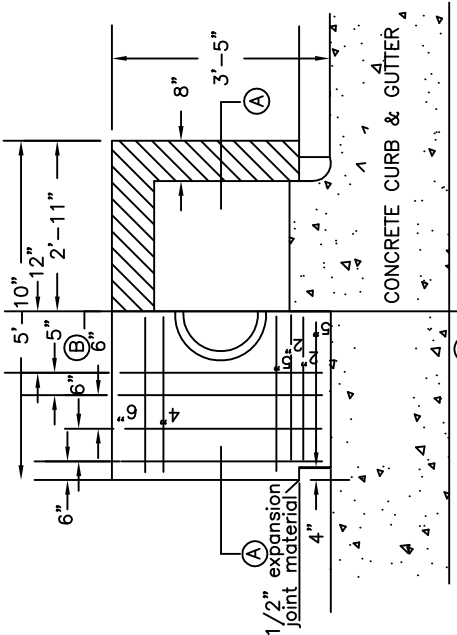
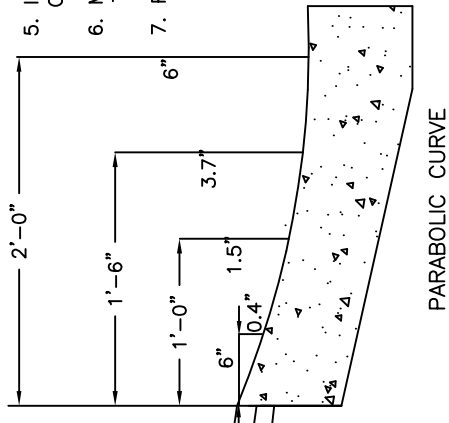
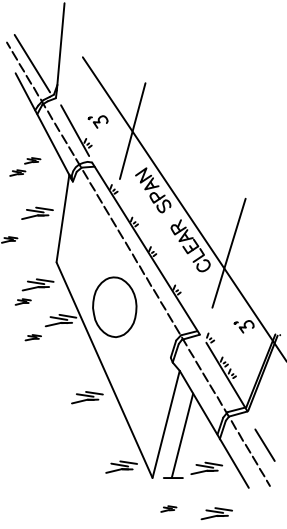




DATE 8/16/04
 REVISED 10/21/05
 SCALE NOT TO SCALE

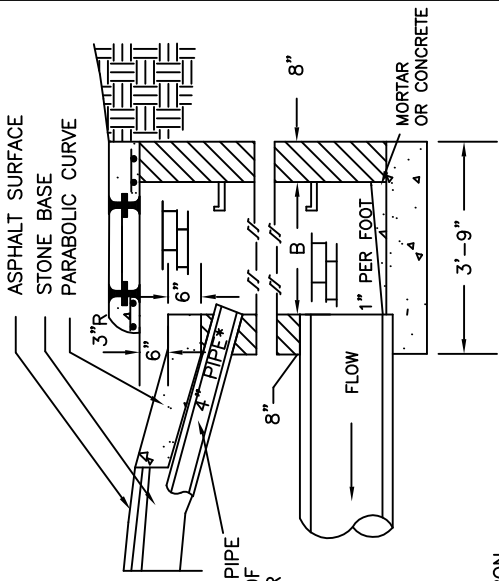
STANDARD BRICK CURB INLET
 CITY OF BURLINGTON, NORTH CAROLINA
 ENGINEERING DEPARTMENT

DETAIL
 SD-2



GENERAL NOTES:

1. ALL CURB INLETS OVER 3'-6" IN DEPTH TO BE PROVIDED WITH STEPS 1'-3" ON CENTER. STEPS SHALL BE IN ACCORDANCE WITH STANDARD SPECIFICATION DRAWING WS-9 AND WS-10
2. CLASS "A" CONCRETE 3000 PSI TO BE USED.
3. PRECAST CONCRETE CURB INLET, JUMBO BRICK OR CONCRETE BRICK MAY BE USED IN LIEU OF CLAY BRICK.
4. FOR 8'-0" IN HEIGHT OR LESS USE 8-INCH WALL. OVER 8'-0" IN HEIGHT USE 12-INCH WALL TO 6'-0" FROM TOP OF WALL AND 8-INCH WALL FOR THE REMAINING 6'-0".
5. IF REINFORCED CONCRETE PIPE IS SET IN BASE OF SLAB OF BOX USE STANDARD SPECIFICATION DRAWING SD-1.
6. MANHOLE RING AND COVER IN CONCRETE TOP SHALL CONFORM TO STANDARD SPECIFICATION DRAWING NO. SD-15
7. REINFORCING STEEL SHALL CONFORM TO ASTM A-615 GRADE 60.



* 4" CAST IRON SOIL PIPE OR PVC