

* COMPOUND OR TURBINE MVR TYPE METER AS REQUIRED BY CITY OF BURLINGTON

12" FROM TOP OF METER TO TOP OF METER BOX

17" FOR 2" CONNECTION
13" FOR 1 1/2" CONNECTION

ANGLED BALL VALVE
METER FLANGE
TURBINE METER*

METER
METER FLANGE
ANGLED BALL VALVE

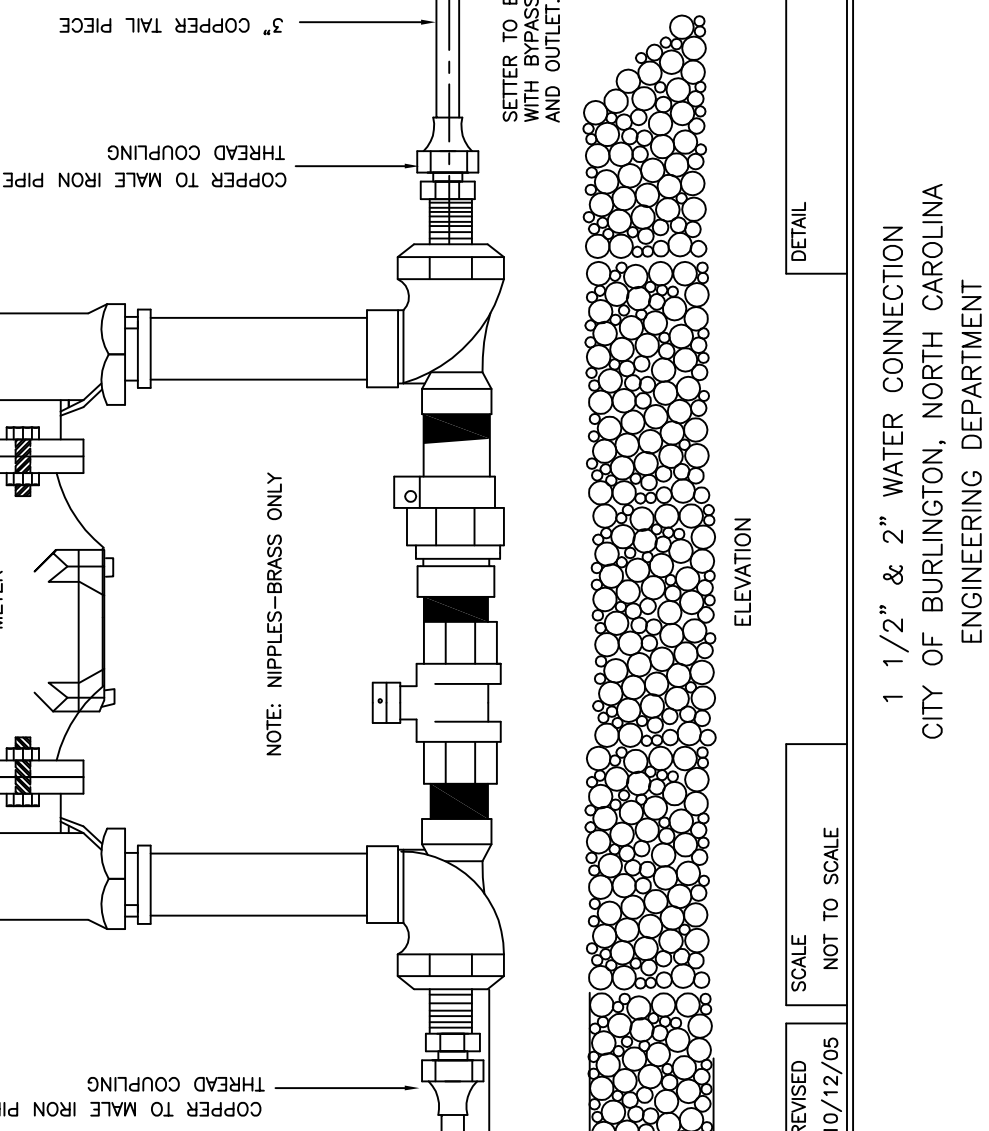
NOTE:
1. SEE DETAIL SC-20 FOR 1 1/2" & 2" METER BOX
2. SEE CITY OF BURLINGTON DETAIL FOR 3/4"- 2" BACKFLOW DEVICES
3. FOLLOWING PAYMENT OF APPLICABLE FEES, THE CITY WILL INSTALL THE WATER METER
4. CONTRACTOR SHALL LEAVE AN IDLER IN YOKE IN PLACE OF METER TO MAINTAIN DIMENSIONS

3" COPPER TAIL PIECE
COPPER TO MALE IRON PIPE
THREAD COUPLING

NOTE: NIPPLES--BRASS ONLY
COPPER TO MALE IRON PIPE
THREAD COUPLING

12" MIN CLR.
12" CLEAN STONE

SETTER TO BE 1 1/2" OR 2" CUSTOM SETTER WITH BYPASS AND FLANGED VALVE ON INLET AND OUTLET.



ELEVATION

DATE 8/16/04	REVISED 10/12/05	SCALE NOT TO SCALE	DETAIL SC-22
-----------------	---------------------	-----------------------	-----------------



1 1/2" & 2" WATER CONNECTION
CITY OF BURLINGTON, NORTH CAROLINA
ENGINEERING DEPARTMENT