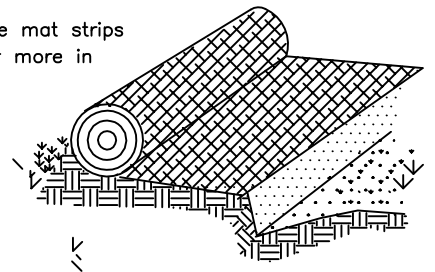
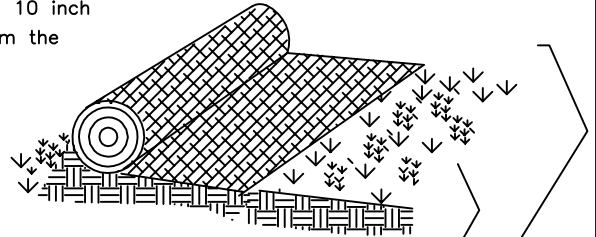


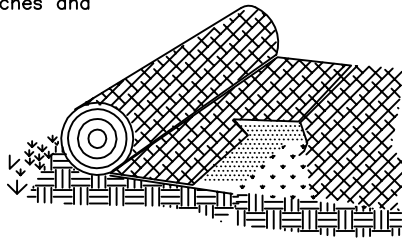
A. Bury the top end of the mat strips in a trench 4 inches or more in depth.



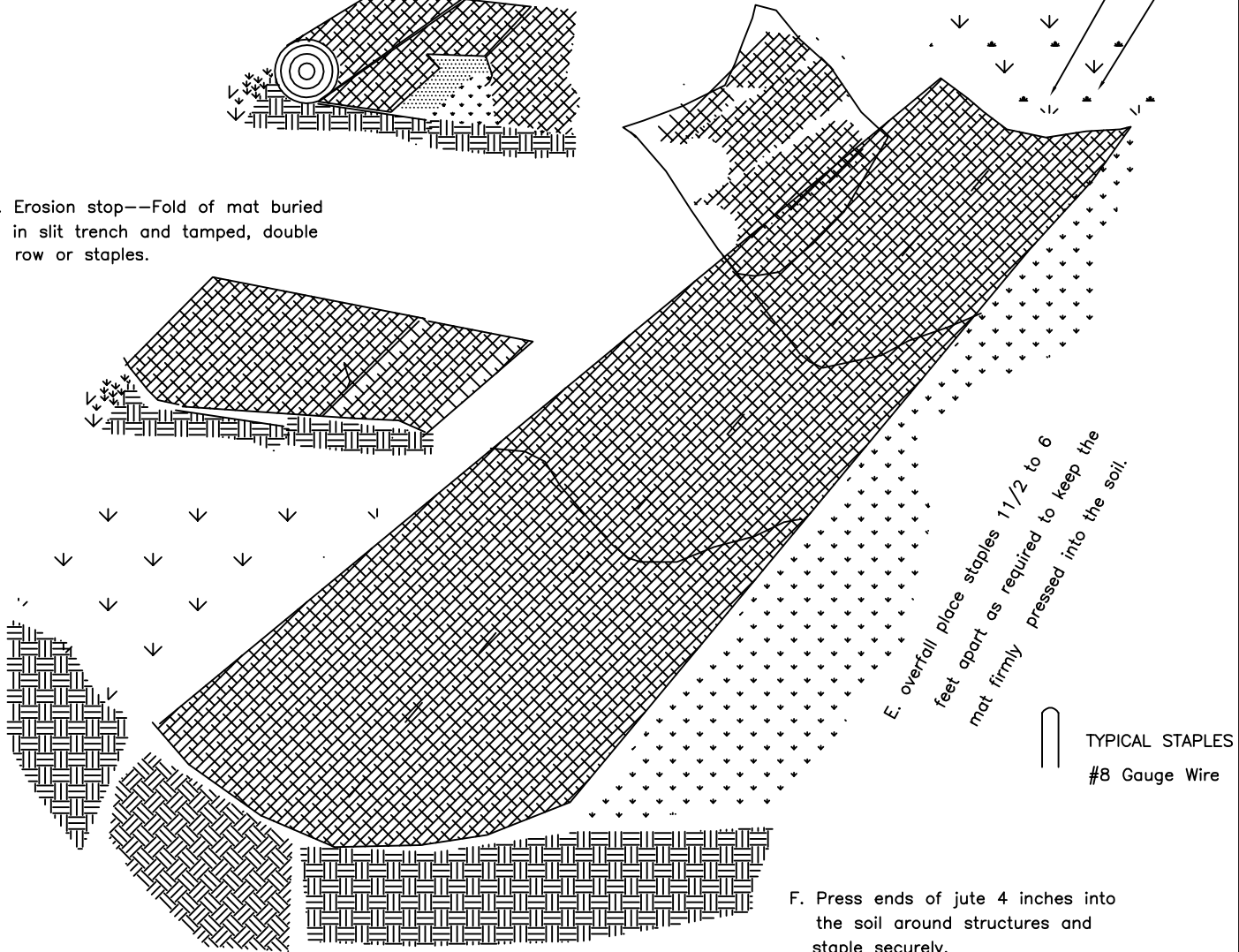
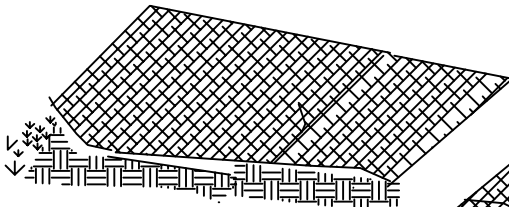
B. Tamp the trench full of soil. Secure with row of staples, 10 inch spacing, 4 inches down from the trench.



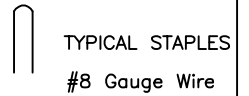
C. Overlap--Bury upper end of lower strip as in 'A' and 'B'. Overlap end of top strip 4 inches and staple.



D. Erosion stop--Fold of mat buried in slit trench and tamped, double row or staples.



E. overall place staples 1 1/2 to 6 feet apart as required to keep the mat firmly pressed into the soil.



F. Press ends of jute 4 inches into the soil around structures and staple securely.



DATE 8/16/04	REVISED 8/18/04	SCALE NOT TO SCALE	DETAIL SE-3
-----------------	--------------------	-----------------------	----------------

TYPICAL EROSION CONTROL MAT DETAIL
CITY OF BURLINGTON, NORTH CAROLINA
ENGINEERING DEPARTMENT