

Burlington Animal Services

Statistical Report- August 2018

Animal Intakes

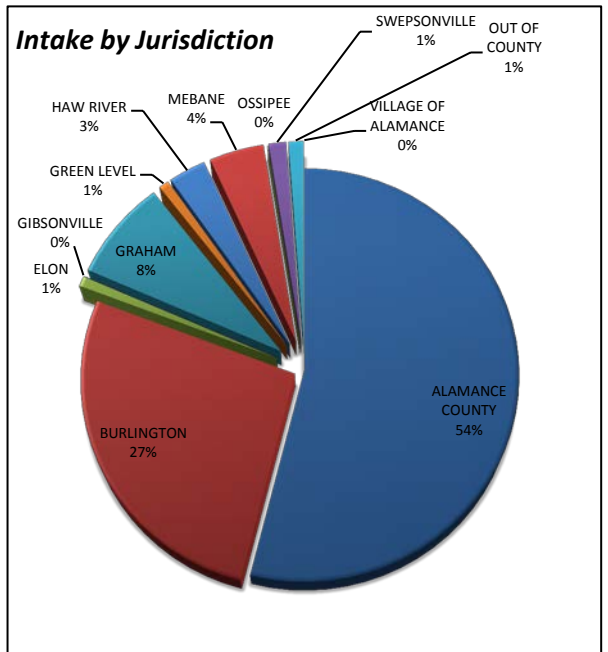
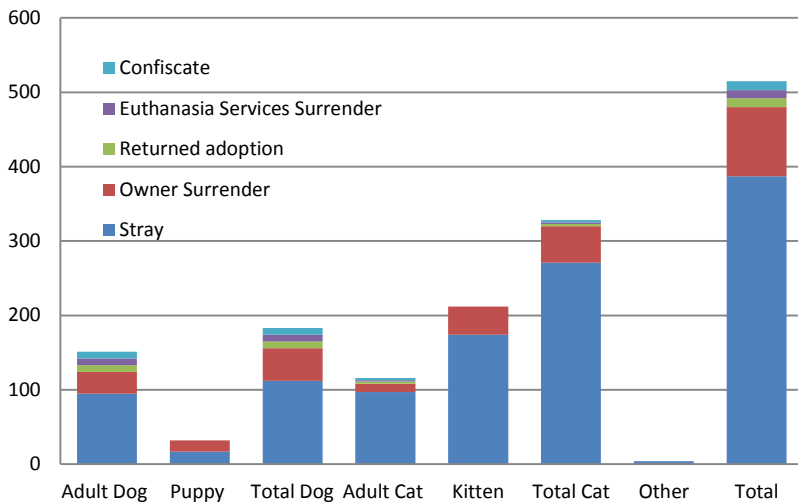
Intake Types

	<u>Adult Dog</u>	<u>Puppy</u>	<u>Total Dog</u>	<u>Adult Cat</u>	<u>Kitten</u>	<u>Total Cat</u>	<u>Other</u>	<u>Total</u>
Stray	95	17	112	97	174	271	4	387
Owner Surrender	29	15	44	11	38	49	0	93
Returned adoption	9	0	9	3	0	3	0	12
Euthanasia Services Surrender	9	0	9	2	0	2	0	11
Confiscate	9	0	9	3	0	3	0	12
Total	151	32	183	116	212	328	4	515

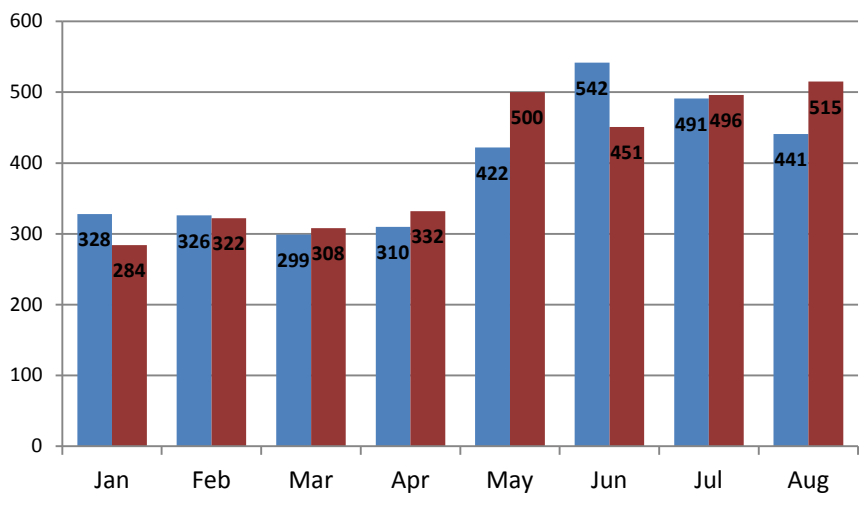
Intake Jurisdiction

<u>Jurisdiction</u>	<u>Total</u>	<u>%</u>
ALAMANCE COUNTY	278	54%
BURLINGTON	138	27%
ELON	4	1%
GIBSONVILLE	0	0%
GRAHAM	41	8%
GREEN LEVEL	4	1%
HAW RIVER	15	3%
MEBANE	22	4%
OSSIPEE	0	0%
SWEPSONVILLE	7	1%
OUT OF COUNTY	6	1%
VILLAGE OF ALAMANCE	0	0%
Total	515	100%

Intake Types



Monthly Animal Intake 2017/2018 Comparison



Burlington Animal Services

Statistical Report- August 2018

Animal Outcomes

	<u>Adult</u> <u>Dog</u>	<u>Puppy</u>	<u>Total</u> <u>Dog</u>	<u>Adult</u> <u>Cat</u>	<u>Kitten</u>	<u>Total</u> <u>Cat</u>	<u>Other</u>	<u>Total</u>	<u>%</u>
Total Live Release ⁽¹⁾	154	27	181	90	158	248	3	432	91%

(1) Does not include animals that were surrendered for euthanasia and animals that arrive dead or died in custody.

Total Outcomes

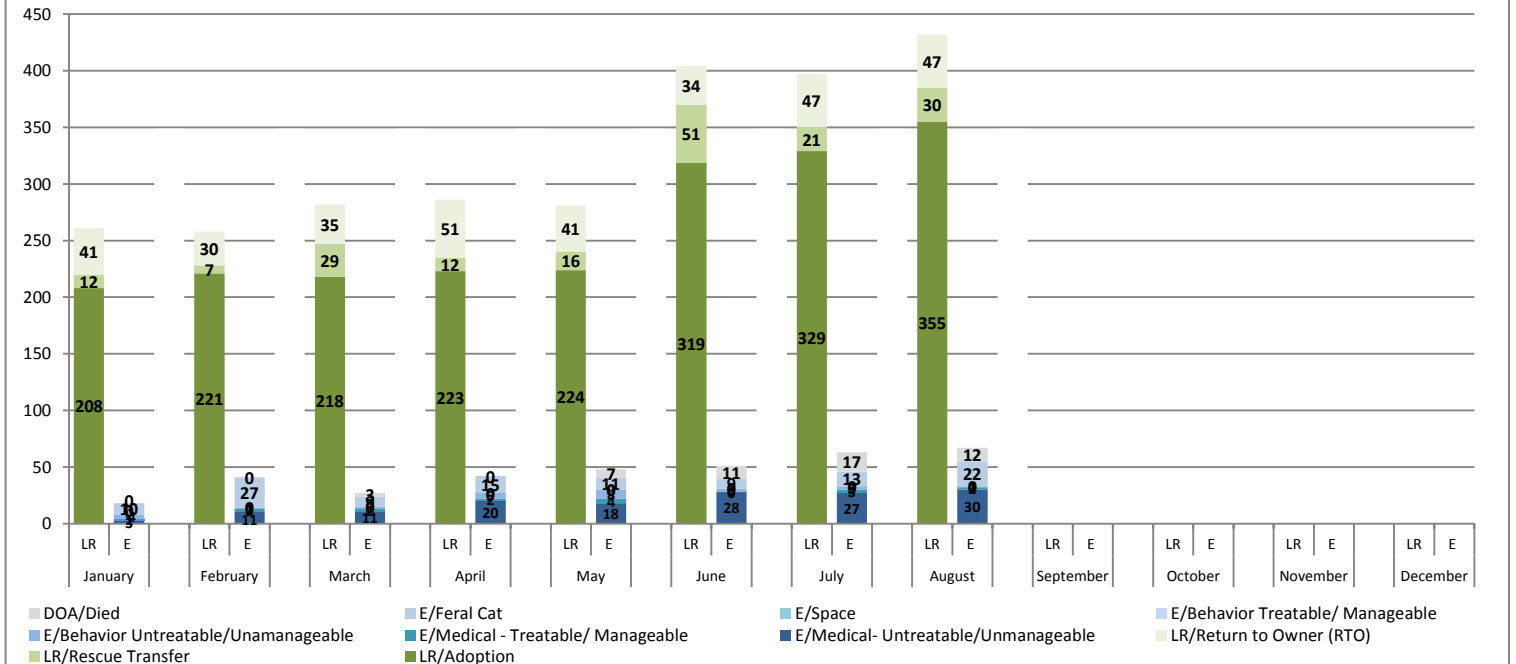
	<u>Adult</u> <u>Dog</u>	<u>Puppy</u>	<u>Total</u> <u>Dog</u>	<u>Adult</u> <u>Cat</u>	<u>Kitten</u>	<u>Total</u> <u>Cat</u>	<u>Other</u>	<u>Total</u>	<u>% of</u> <u>total</u>
Return to Owner (RTO)	38	0	38	5	4	9	0	47	9%
Adoption	100	26	126	81	146	227	2	355	71%
Rescue Transfer	16	1	17	4	8	12	1	30	6%
Shelter Euthanasia	5	0	5	28	6	34	6	45	9%
Euthanasia Services Surrender	9	0	9	2	0	2	0	11	2%
Died/ DOA	1	0	1	1	10	11	0	12	2.4%
Total	169	27	196	121	174	295	9	500	100%

Shelter Euthanasia Reasons

	<u>Adult</u> <u>Dog</u>	<u>Puppy</u>	<u>Total</u> <u>Dog</u>	<u>Adult</u> <u>Cat</u>	<u>Kitten</u>	<u>Total</u> <u>Cat</u>	<u>Other</u>	<u>Total</u>	<u>%Euth</u>
Behavior	1	0	1	0	0	0	0	1	2%
Feral	0	0	0	22	0	22	0	22	40%
Medical	13	0	13	8	6	14	5	26	47%
Total	14	0	14	30	6	36	5	55	89%

2017 Monthly Animal Outcomes By Type

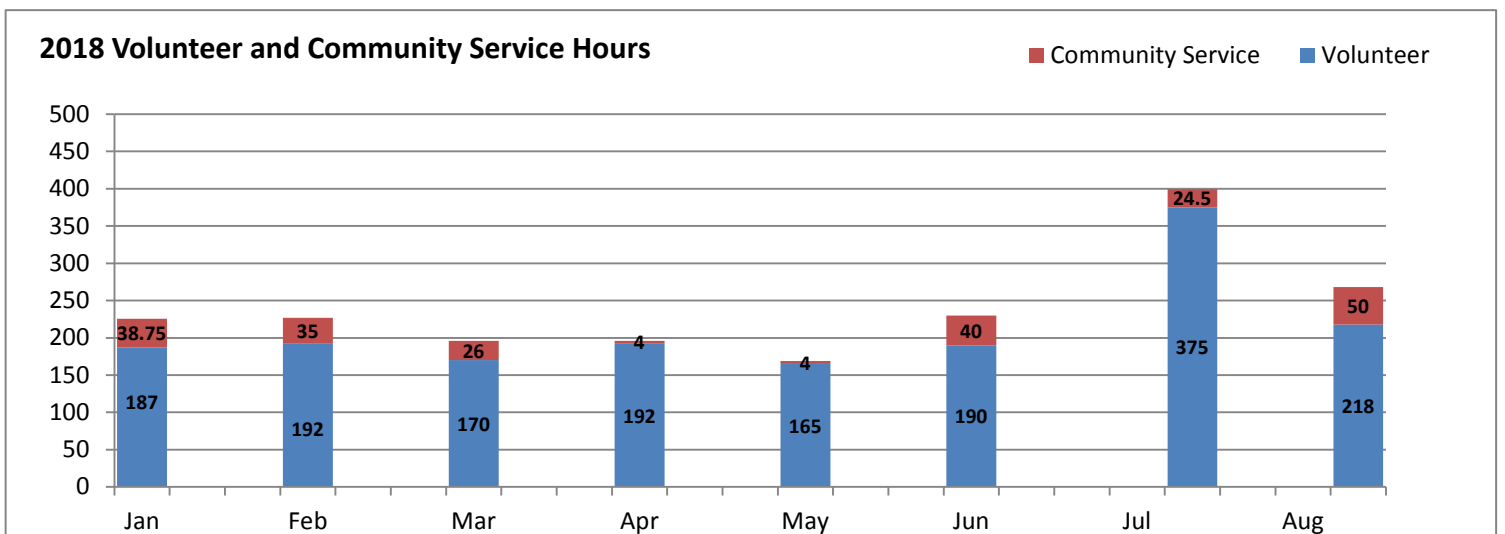
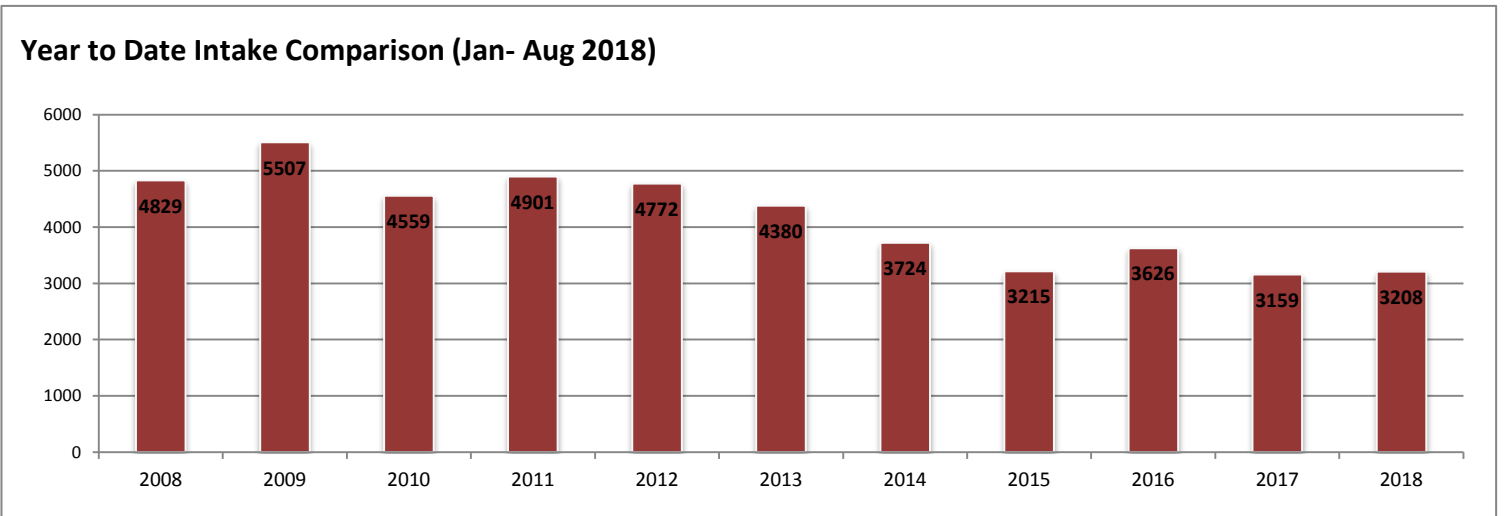
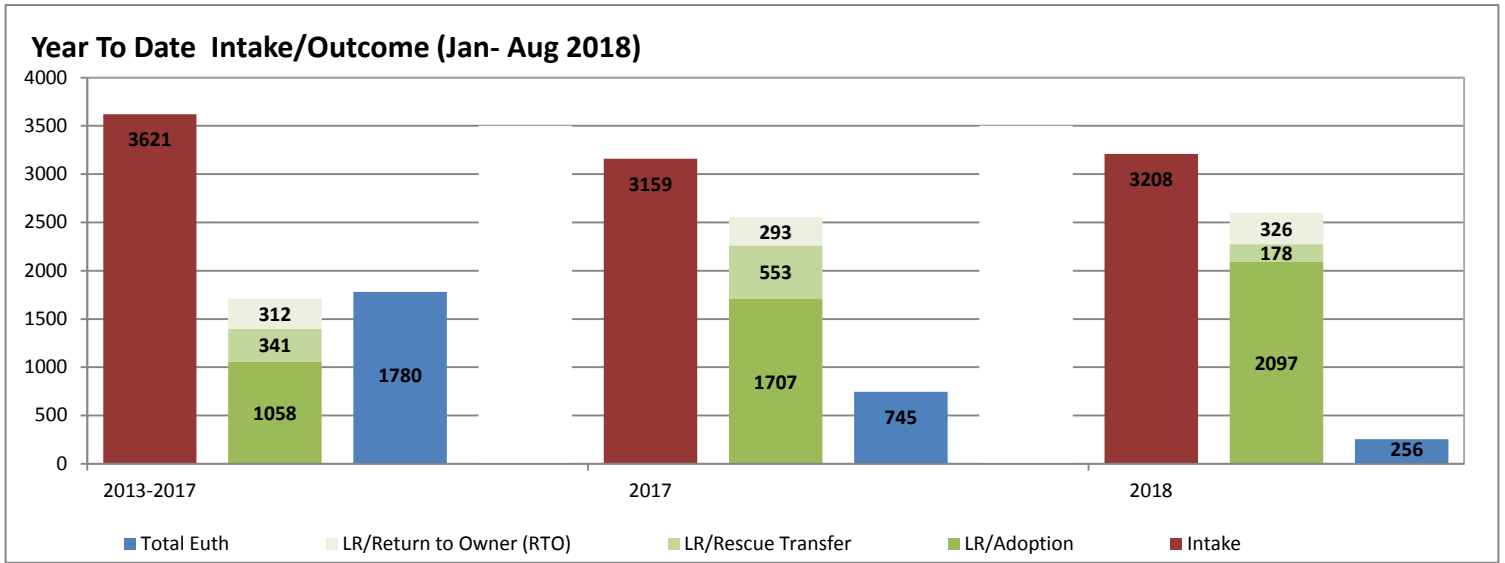
LR= Live Release E= Euthanized or Died



Burlington Animal Services

Statistical Report- August 2018

Activity Comparison Statistics



Burlington Animal Services

Statistical Report- August 2018

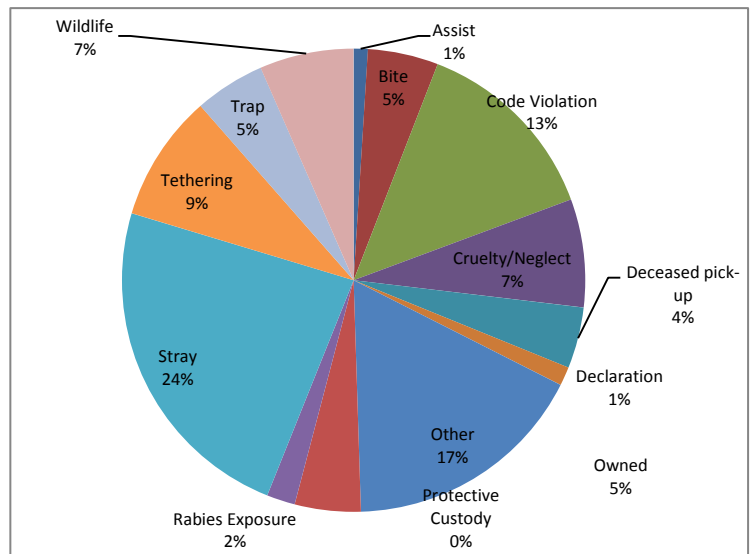
Field Services

activities related to assisting other agencies such as police or fire, and providing assistance to the public for animal related matters in the field	Assist	3
field activities involving animal bites	Bite	15
field activities related to complaints of code violations involving barking, nuisance, abandoned pets, fowl, over the limit of number of dogs etc	Code Violation	41
field activities involving complaints/ investigations of cruelty and/or neglect	Cruelty/Neglect	23
pick-up and removal of deceased animals	Deceased pick-up	13
(field activities involving § 67-4 and § 130A-200- dangerous and vicious dogs	Declaration	4
field activities not included in the other categories such as court, special events etc	Other	52
activities related to field pick up of surrendered animals; notice for recovery of owned animal at shelter	Owned	14
field activities involving temporary custody of owned animals	Protective Custody	0
field activities involving potential rabies exposure to human or domestic animal	Rabies Exposure	6
field calls related to domestic animals at large	Stray	72
activities involving complaints related to tethering ordinance	Tethering	27
field activities related to trapping domestic animals	Trap	15
activities related to wildlife	Wildlife	20

Total 305

Average Field Service Responses per day:

9.8



Monthly Field Services Responses 2016/ 2017

